

Reduced Glare

VECO

DOWNLIGHT SERIES

A series of downlights with a simplistic design that is available in various sizes, shapes, and finishing. Incorporating ELR's signature modular concept design, LED modules are fully interchangeable with various choices to provide optimal illumination for all kinds of spaces.



Future proof with upgradeable module



Multiple accessories options



Trim thickness < 2mm



Fixture size of a tennis ball Ø68mm

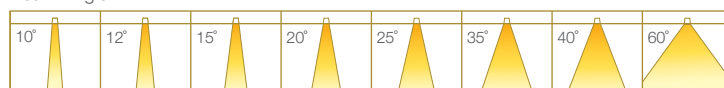
Fixture Features



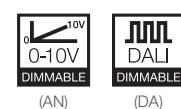
Module Colour Temperature Variation



Beam Angle



Driver Dimming Variation



VECO 2

RECESSED ROUND FIX / TILT DOWNLIGHT LUMINAIRE



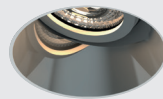
#ROUND
#FIX
#TRIM



#ROUND
#TILT
#TRIMLESS



#ROUND
#FIX
#TRIM



#ROUND
#TILT
#TRIMLESS

TECHNOLOGY AND FEATURES



Advanced Thermal Protection System



Low Flicker, No Risk (IEEE 1789)



Converging Optical Lens Maximising LOR



Ceiling Safe

Reduced Glare

AVAILABLE OPTIONS

FITTURE COLOUR OPTIONS	Trim Colour Options	Reflector Colour Options																							
	MATT WHITE RAL9003	MATT BLACK RAL9011	CHROME	CHROME BLACK	CHROME GOLD																				
MATT WHITE RAL9003																									
MATT BLACK RAL9011																									
ACCESSORIES	<p>Honeycomb Anti-Glare Louvre Soft Lens Linear Spread Lens Comfort Pro IP54</p> <p><i>*IP54 seal accessory is valid for fix angle fixtures only.</i></p>																								
LED MODULE	<p>20C/P</p> <table border="1"> <thead> <tr> <th></th> <th>15°</th> <th>25°</th> <th>40°</th> </tr> </thead> <tbody> <tr> <td> <p>SINGLE CCT</p> <p>2700K 3000K 3500K 4000K 5000K</p> <p>ProART ProART98</p> </td> <td>✓</td> <td>✓</td> <td>✓</td> </tr> <tr> <td> <p>WARM DIM</p> </td> <td></td> <td></td> <td></td> </tr> <tr> <td> <p>tuneWHITE</p> </td> <td></td> <td>✓</td> <td>✓</td> </tr> <tr> <td> <p>flexiK</p> </td> <td></td> <td></td> <td></td> </tr> </tbody> </table> <p><i>**tuneWHITE and flexiK are recommended to be paired with Soft Lens for better colour mixing effect.</i></p>						15°	25°	40°	<p>SINGLE CCT</p> <p>2700K 3000K 3500K 4000K 5000K</p> <p>ProART ProART98</p>	✓	✓	✓	<p>WARM DIM</p>				<p>tuneWHITE</p>		✓	✓	<p>flexiK</p>			
	15°	25°	40°																						
<p>SINGLE CCT</p> <p>2700K 3000K 3500K 4000K 5000K</p> <p>ProART ProART98</p>	✓	✓	✓																						
<p>WARM DIM</p>																									
<p>tuneWHITE</p>		✓	✓																						
<p>flexiK</p>																									
DRIVER DIMMING	<p>(ND) (PH) (AN) (DA)</p>																								

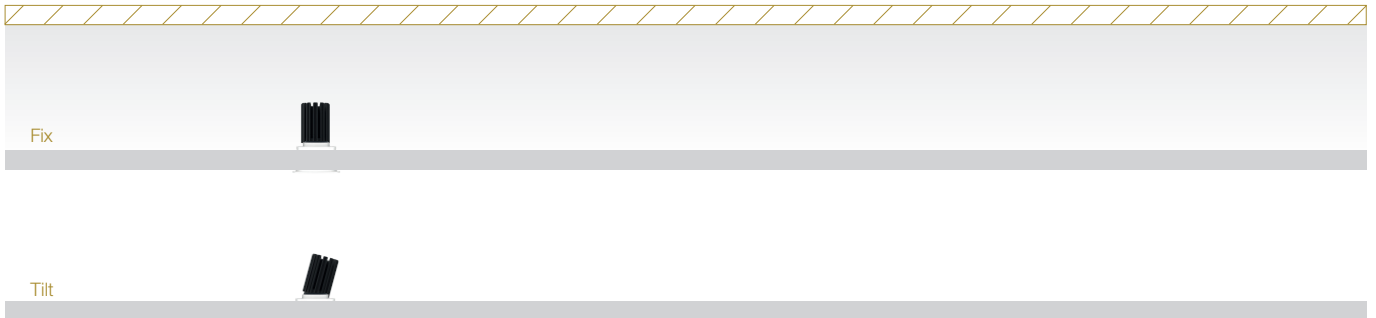
VECO 2

#ROUND
#FIX
#TILT
#TRIM
#TRIMLESS

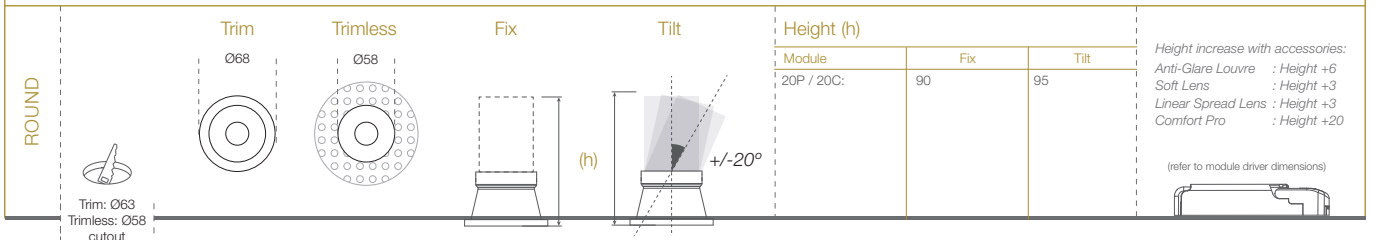
SPECIFICATIONS

FIXTURE	
Family Type	Veco series
Fixture Colours	Matt white, matt black
Reflector Colours	Matt white, matt black, chrome, chrome black, chrome gold
Fixture Materials	Aluminium
Accessories	Honeycomb anti-glare louvre, soft lens, linear spread lens, Comfort Pro, IP54 seal
Ingress Protection	IP40, IP54
LED MODULE & DRIVER	
Compatible LED Modules	20 series LED modules
Lifetime	Up to 50,000 hours L80 lamp life with LM80 tested LED chip packages
Beam Angles	15°, 25°, 40°
Colour Temperatures	2700K, 3000K, 3500K, 4000K, 5000K, Warm Dim, tuneWHITE, flexiK
CRI	High Efficiency (CRI~85), ProART (CRI~95), ProART98 (CRI~98)
Driver (Dimming)	Non-dim, phase (leading & trailing edge), 0-10V, DALI

20 Pro /
20 Classic



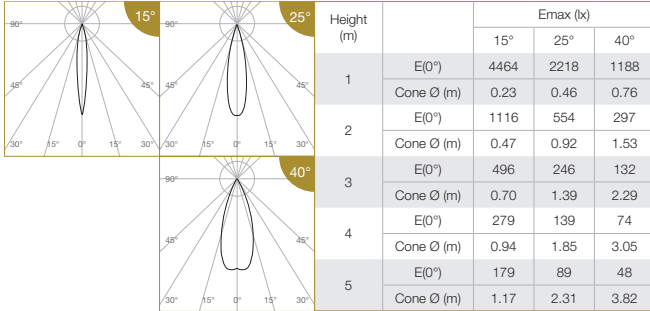
DIMENSIONS (MM)



VECO 2

PHOTOMETRICS

20 PRO



Correction Factor:
 20P - f = 1.00
 20C - f = 0.81
 20P-24CV - f = 0.79
 20C-24CV - f = 0.64

ELR LED Module				20P	20C	
LED Power				8W	6.2W	
System Power				10.5W	8.3W	
Luminous Flux (lm)	Single CCT (3000K)	15°	Type	High Efficiency Ra-85	745	607
			ProART Ra-95	634	516	
			ProART98 Ra-98	522	425	
		25°	High Efficiency Ra-85	753	614	
			ProART Ra-95	641	522	
			ProART98 Ra-98	527	430	
	40°	High Efficiency Ra-85	761	620		
		ProART Ra-95	648	527		
		ProART98 Ra-98	533	434		
	Input Power (24CV)				8W	6.2W
	Luminous Flux (lm)	24CV Single CCT (3000K)	15°	High Efficiency Ra-85	580	478
				ProART Ra-95	493	407
ProART98 Ra-98				406	335	
25°			High Efficiency Ra-85	586	484	
			ProART Ra-95	498	411	
			ProART98 Ra-98	410	339	
40°		High Efficiency Ra-85	592	489		
		ProART Ra-95	504	415		
		ProART98 Ra-98	415	342		

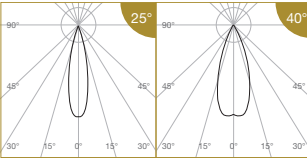
Data are based on 3000K (ProART CRI-95). Nominal data of 2700K and 3500K are shared with 3000K. Higher CCT of 4000K and 5000K will have a nominal data value of 5% higher than published. (f = 1.05) High Efficiency CRI-85 will have a nominal data value of 15% higher than published. (f = 1.17) ProART98 CRI-98 will have a nominal data value of 18% lower than published. (f = 0.82)

Nominal CRI-85, equals to Ra>80-87, R9>0
 Nominal CRI-95, equals to Ra>90-97, R9>50
 Nominal CRI-98, equals to Ra>97-99, R9>93

VECO 2

PHOTOMETRICS

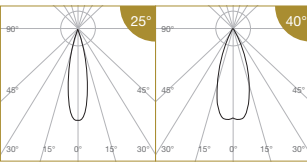
20 PRO WARM DIM



Height (m)		Emax (lx)		ELR LED Module			20P	20C
		25°	40°	LED Power			8W	6.2W
1	E(0°)	2577	1381	System Power			10.5W	8.3W
	Cone Ø (m)	0.46	0.76	Luminous Flux (lm)	Type	Beam Angle	CRI	744
2	E(0°)	644	345		Warm Dim (3100K)	25°		
	Cone Ø (m)	0.92	1.53	40°				
3	E(0°)	286	153	<i>Data are based on maximum output at 3100K.</i>				
	Cone Ø (m)	1.39	2.29	<i>Nominal CRI-95, equals to Ra>90-97, R9>50</i>				
4	E(0°)	161	86					
	Cone Ø (m)	1.85	3.05					
5	E(0°)	103	55					
	Cone Ø (m)	2.31	3.82					

Correction Factor: 20P WD - f = 1.00
20C WD - f = 0.78

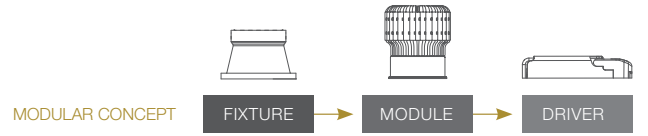
20 PRO tuneWHITE/flexiK



Height (m)		Emax (lx)		ELR LED Module			20P	20C
		25°	40°	LED Power			8W	6.2W
1	E(0°)	2094	1122	System Power			10.5W	8.3W
	Cone Ø (m)	0.46	0.76	Luminous Flux (lm)	Type	Beam Angle	CRI	605
2	E(0°)	523	280		tuneWHITE/flexiK (4000K / 6500K)	25°		
	Cone Ø (m)	0.92	1.53	40°				
3	E(0°)	233	125	<i>Data are based on maximum output at highest CCT (4000K / 6500K).</i>				
	Cone Ø (m)	1.39	2.29	<i>2700K will have a nominal data value of 10% lower than published. (f = 0.90)</i>				
4	E(0°)	131	70	<i>1800K will have a nominal data value of 30% lower than published. (f = 0.70)</i>				
	Cone Ø (m)	1.85	3.05	<i>Nominal CRI-95, equals to Ra>90-97, R9>50</i>				
5	E(0°)	84	45					
	Cone Ø (m)	2.31	3.82					

Correction Factor: 20P TW / FK - f = 1.00
20C TW / FK - f = 0.78

VECO 2



ORDERING MATRIX CHART

Fixture												
Type	Trim Options		Shape		Angle		Colour		Reflector Colour		Accessories	
VECO-2	T	Trim	RD	Round	FX	Fix	WH	Matt White	WH	Matt White	N	None
	X	Trimless										
					TL	Tilt	MB	Matt Black	MB	Matt Black	AGL	Anti-Glare Louvre
							CR	Chrome	CB	Chrome Black	SL	Soft Lens
								CG	Chrome Gold	LSL	Linear Spread Lens	
										CP	Comfort Pro	
										IP	IP54**	

**IP54 seal accessory is valid for fix angle fixtures only.

Single CCT LED Module						Driver			
LED Power	Beam Angle		Colour Temp		CRI		Dimming		
ELR20P	8W	15	15°	27	2700K	HE	Ra-85	ND	Non-Dim
ELR20C	6.2W	25	25°	30	3000K	PA	ProART	PH	Phase
				35	3500K	PP	ProART98	AN	0-10V
		40	40°	40	4000K			DA	DALI
				50	5000K				
ELR20P-24CV	8W	15	15°	27	2700K	HE	Ra-85		
ELR20C-24CV	6.2W	25	25°	30	3000K	PA	ProART		
				35	3500K	PP	ProART98		
		40	40°	40	4000K				
				50	5000K				

*Drivers for 24CV LED modules are sold separately.

Warm Dim LED Module						Driver			
LED Power	Beam Angle		Colour Temp		CRI		Dimming		
ELR20P	8W	25	25°	WD	Warm Dim	PA	ProART	PH	Phase
ELR20C	6.2W	40	40°					AN	0-10V
								DA	DALI

tuneWHITE LED Module						Driver			
LED Power	Beam Angle		Colour Temp		CRI		Dimming		
ELR20P	8W	25	25°	TW1831	tuneWHITE 1800K-3100K	PA	ProART	DA	DALI
ELR20C	6.2W	40	40°	TW1840	tuneWHITE 1800K-4000K				
				TW2765	tuneWHITE 2700K-6500K				

flexiK LED Module						Driver			
LED Power	Beam Angle		Colour Temp		CRI		Dimming		
ELR20P	8W	25	25°	FK##	flexiK	PA	ProART	PH	Phase
ELR20C	6.2W	40	40°					AN	0-10V
								DA	DALI

denotes the first two digits of preferred CCT ranging from 1800K to 6500K by increment of 100K.

example: VECO-2.T.RD.TL.WH.WH.AGL.ELR20P.15.27.PA.DA
*Custom RAL colour options available.